

✈ BEFA Newsletter ✈

BEFA: Phone (425) 237-2332, M/S 94-35

840 West Perimeter Road, Renton, WA 98055

Welcome New Members!

<u>Name</u>	<u>Class</u>	<u>Location</u>
Wendell Beitzell	III	PAE
Jon Brooks	I	RNT
Dion Fisher	I	RNT
Paul Jimenez	Guest	RNT
Chuck Jung	Guest	Both
Ray Kapper	III	RNT
Matthew Orr	III	RNT
Gabriella Rios-Georgio	II	RNT
Kevin Thomazios	III	RNT
Abolfazl-Hossein Zadeh	Guest	RNT

New Solos!

<u>Name</u>	<u>Date</u>	<u>Instructor</u>
Jon Vogel	2/11	Hickman
Carey Lunsford	2/22	Demco
Andreas Weisweaver	2/23	Wolvington

Congratulations!

<u>Name</u>	<u>Date</u>	<u>Rating</u>	<u>Instructor</u>
Cameron Raspet	2/3	Private	Allen
Wai Wong	2/10	Private	Yager
Yenew Kassaye	2/11	Private	Hickman
Jenn Gill	2/17	Private	Hickman
Joe Sharp	2/17	Private	Hickman
Dayne Olmstead	2/17	Comm SEL	Yager
Tim Veryioglou	2/21	CFI	Wolvington
Will Allen	2/23	CFII	Wolvington
Oliver Meier	2/24	SES	Yager

Coming Events

<u>Event</u>	<u>Time</u>	<u>Date</u>	<u>Location</u>
• <u>Aircraft Maintenance Team.</u> (Contact Walt Cameron)	6-9pm	TH	RNT
• <u>Board Meeting</u>	5:00pm	3/16	RNT
• <u>CFI Meeting</u>	5:00pm	3/30	RNT

From Your President By Frank Marshall

2006 Aircraft Utilization: For those that did not get a good look during the Crab Feed presentation, the accompanying figure shows the total hours flown in 2006 for our fleet by tail number. The aircraft are sorted roughly by hourly rate.

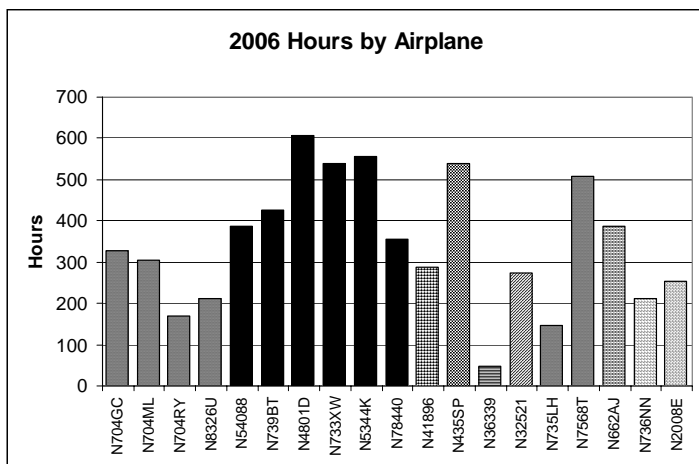
Once again 4801D, the only Renton-based GPS-equipped C172 at the baseline C172 rate, was the champion of the fleet. In addition 435SP, the higher performance C172 with an autopilot, was also a very popular airplane, essentially matching the most popular baseline 172s in usage. This was exactly the result the board was hoping for when its hourly rate was reduced after it was purchased outright from the previous leaseback owner.

The C182s are also normally contenders for the most popular airplane, and 7568T certainly lived up to that billing in 2006. The hours for 735LH were down significantly this year because it was out of service during the summer months.

All of our larger “trip” airplanes, not to mention the Warrior, are now GPS equipped, but there does seem to be an appetite for more GPS-equipped 172s. The survey the board is now preparing will address this issue, as well as options for paying for such upgrades. (To put it another way, is that appetite still there if the upgrades drive up the cost for the 172s a bit?)

One option being considered is to replace the KLN94 in 7568T with a Garmin 430. (We already have two of the Garmin units in the Cirrus, and a new one in 68T could be upgraded either now or later to be WAAS enabled.) We could then put the KLN94 into 54088, which like 4801D has the 50-gallon long range fuel tanks. Stay tuned.

(Please see the fleet utilization chart on the next page)



Fuel Surcharges: Surcharges and rates for March are as follows:

Aircraft	Base Rate	Surcharge	Total Rate
BE76	\$159.00	\$12.73	\$171.73
C150	\$52.00	\$3.69	\$55.69
C172	\$68.00	\$5.29	\$73.29
C172SP	\$75.00	\$5.96	\$80.96
C172XP	\$120.00	\$5.09	\$125.09
C182Q	\$100.00	\$8.71	\$108.71
C182RG	\$105.00	\$8.84	\$113.84
Citabria	\$75.00	\$5.29	\$80.29
PA-28-151	\$68.00	\$5.29	\$73.29
PA-28R200	\$89.00	\$6.03	\$95.03
PCATD-M	\$15.00		\$15.00
PCATD-NM	\$20.00		\$20.00
SR20-WD	\$113.00	\$8.04	\$121.04
SR20-WE	\$133.00	\$8.04	\$141.04

(“M” and “NM” refer to members and non-members, respectively, and “WD” and “WE,” to weekdays and weekends plus holidays, respectively.)

Safety and Operations Briefing

By Wes McKechnie, BEFA Operations Manager

MEMBER OFFICE RESPONSIBILITIES

A reminder – as we all know, BEFA requires its members to pay attention to detail around the office at night and on the days that the Staff is not in. When the Staff leaves they will secure the building. This naturally gets “undone” from member office use after hours since BEFA’s facility is 24/7 for its members, even though the Staff or Board Members are not in. CFIs certainly play a lead role in the leadership in this area, but even they are not here all the time. So, when the Staff leaves for the evening, the front door, windows and the sliding glass door must all stay closed and locked, and you must only use the side entrance. When you leave for the night, please check that all the windows and doors are closed and locked. Leave the front porch and side porch lights on

and turn off the debrief room lights and the “can” lights around the perimeter of the lobby. Citabria pilots, make sure the hangar doors and man-doors are all closed and locked. Also, if the staff is busy and the phone is ringing, it’s OK to pick it up and take a message. When you are the last one leaving, please also lock the deadbolt on the side door. Thank You.

“RAMPING” UP FOR SPRING/SUMMER FLYING

We’ve all been pushing for Spring to show up, but we’re unfortunately (unless you’re also a SKIBACS member!) still in the winter season. But, we’ve had a couple of days of great weather here and there, and we’d like to remind you of ramp etiquette in preparation for the soon-to-arrive prime flying season. Mainly, please be conscious of whether you are possibly blocking pilots in behind you for long periods of time when you’re starting your plane or returning from a flight. Don’t unnecessarily rush to get started if it compromises safety, but just use common consideration of the folks waiting to go behind you. Don’t look at your chart, fish out frequencies, etc. , thus holding up other pilots’ progress on our limited ramp space. Prepare all this stuff before you pull out onto the ramp lane, and do as much pre/post flight with your CFI prior to blocking the lane. The other option is to start and taxi to the old “B” ramp south of BEFA to sort out issues. Thanks.

PINCH HITTER COURSE

Speaking of ramping up for the Spring/Summer flying season, please call the Renton office at (425) 237-2332 or send an e-mail to befa_office@mindspring.com to enroll your companion in the BEFA “Pinch Hitter” course. This course consists of approximately 6 hours of ground school to prepare your companion to fly and land a plane in the event of pilot incapacitation. This is the only time that the insurance and BEFA rules allow manipulation of the controls of a BEFA plane by a non-member. We will have the dates for the pinch-hitter ground school soon. Check the BEFA web site at: befa.org to get the latest information. The cost is only \$10 per person for the ground school. The course is typically conducted in three (3) 2-hour classes held over a few weeks. After the ground school, the flight training portion of the course can be set up with approved BEFA Pinch Hitter CFI’s, with planes and CFI’s being charged at the prevailing rates.

GRIEVANCES/INCIDENTS:

- 2/23/07 The side door in the Renton office was found open and unlocked at night.

Notes From The Office

‘Attaboys For Our Volunteers

Your fellow members continue to pitch in to keep us running smoothly, often saving money in the process. This month we thank:

- Tim Veryioglou for fixing plumbing & electrical outlets.
- John Scearce for installing new switches.
- Dayne Olmstead for updating the KLN-94 databases.
- Norm Craven for donating an intercom system.
- Jack Yager, Fred Quarnstrom, Keith Murphy and Lis Demco for helping with the billing.
- Terry Thomas for developing the survey.
- Andrew Sachs for installing the toilet in the back room.
- Chris Vegter, Lori Bechtold, Jim Goodnow, Bob Ingersoll, Kyle Helbing, Chris Mathews for helping with hangar cleaning & set up for the General Meeting & Crab Feed. Too many for the breakdown & cleanup to record names – thanks too you all for pitching in.
- Vince Massey for moving planes.
- Bethany Summers for filing all the invoices and pilot change requests.

Volunteer Help Is STILL Needed

BEFA has a regular need for volunteer help. Unfortunately, Boeing work demands are making it increasingly difficult to provide community service. BEFA has many needs and cannot satisfy them without member help. If you can contribute, please call the office to volunteer. Some of the things that require volunteers are:

- Members with drywall taping experience needed.
- Someone to help move an electrical outlet a few feet in one of the bathrooms
- Metal roof experience needed to repair/redo our hangar roof
- Anyone with pavement paint-striping experience needed

If you can head up or help on any of the above projects please let Wes know. Your efforts are greatly appreciated!

Quarterly CFI Meeting in Renton 3/30

By Bob Guthrie

The 2007 1st quarter CFI meeting will be held in the Renton classroom on Friday, March 30th at 5:00pm. Our guest will be Dave Gildea, Manager of RNT Tower. He will be bringing with him many of his staff controllers. This will be a great opportunity to meet and share information with the RNT ATCT staff.

From Your Safety Officer

By Bob Guthrie

Spring is coming! It has been a tough winter for flying, regardless of whether you were planning to go VFR or IFR. If you are like me, your confidence level is a little bit lower than last fall. The March issue of Flight Training lists ten (10) ways to regain piloting confidence. Several of their points apply to us, and in particular - the more you fly the more you will want to fly. If it has been some time since you were able to match the weather, airplane, instructor and your schedule, recall the positives. Remember what made you want to fly in the first place. Relive your memories, and share them with your fellow pilots. Be an environmentalist(that is get down to the airport environment and watch.) Take yourself by surprise: if the weather is right and your favorite airplane is available and you are current, go for it.

That flight will be the beginning of getting back in the air.

Fly Safely.

Bob Guthrie

For the Web Heads: Links

SCHEDULE MASTER: <http://www.schedulmaster.com>
or
1-800-414-6114 using your user ID, password and phone menu

BEFA Homepage: <http://www.befa.org>

Webmaster: John Scearce john.p.scearce@boeing.com

Classified Ads

This space available for free classified ads by BEFA members. Contact the newsletter editor.
--

Officers and Staff

President	<u>Frank Marshall</u> 94-35 franklinmarshall@comcast.net	Hm: 253-838-1661 Cell: 206-498-1164 Fax: 425-234-3651
Vice-President	<u>Joe Kranak</u> 7M-HC joe.kranak@boeing.com	Hm: 425-391-6071 Wk: 206-662-4400 Cell: 206-856-7948
Treasurer	<u>Bob Bumpous</u> 9U-RK robert.h.bumpous@boeing.com	Pager: 206-416-5401 Wk: 425-234-3237 Fax: 425-234-9048
Ops Officer	<u>Matt Smith</u> 94-35 mattfsmith@yahoo.com	Hm: 425-562-3076 Wk: 425-234-1071 Fax: 425-234-3651
Safety Officer	<u>Bob Guthrie</u> 94-35 robertguthrie@earthlink.net	Hm: 206-524-2171 Cell: 206-372-6052 Fax: 425-234-3651
Secretary	<u>Bob Ingersoll</u> 94-35 robertji77@aol.com	Home: 206-772-3351 Cell: 206-755-7870 Fax: 425-234-3651
<u>Office Staff</u>		
Ops Manager	<u>Wes McKechnie</u> 94-35 befa_ops@mindspring.com	Hm: 206-932-2935 Wk: 425-237-2332 Pager: 206-540-7720
<u>Mike Lunning, Diana Cassity</u>		Wk: 425-237-2332
befa_office@mindspring.com		Fax: 425-234-3651
<u>Darlene Jaymen</u>		Wk: 425-237-2332
befa_account@mindspring.com		Fax: 425-234-3651
Maintenance	<u>ACE Aviation</u>	Contact, in order:
1) Ops Manager: Leave voicemail (425) 237-2332 or Pager 206-540-7720		
2) Ops Officer, or 3) Any Board Member		
<u>Everett</u>		
Office: No phones at this time in Everett. Please call RNT Office in an emergency, otherwise call Doug Jacobs or Oscar Naimi (phone numbers below).		
Maintenance Focal:	<u>Brian Behrend</u>	Wk: 425-266-8155 Cell: 425-280-1215
Facilities:	<u>Oscar Naimi</u>	Wk: 425-315-0566
Safety Mgr:	<u>Mike Dubbery</u>	Cell: 425-239-3630
Membership/Communication:		
	<u>Doug Jacobs</u>	Cell: 206-853-3164
E-mail DL:	<u>Moliere Francois</u>	Wk: 425-342-6784
moliere.francois@boeing.com		
Newsletter Editor		
	<u>Marissa Singleton</u>	Wk: 253-657-3276
marissa.k.singleton@boeing.com		M/C 8R-79